

ITEM NO. : 27

ITEM : TANK LEVEL GAUGES WITH AND WITHOUT TRANSMISSION

REFER OUR G. A. DRG.NO.RMBL-1001-A/0.

PRINCIPLE OF OPERATION:

The REVATHI-HEINRICH LIQUID LEVEL INDICATOR Type RMBL, was designed to meet the ever-increasing stringency in provision and application of level measurement in fuel-depots, Ocean Tankers, or any reservoir holdings corrosive or inflammable liquids, even under high pressure. The RMBL is reliable, exact working measuring instrument utilizing the float gauge principle with glandless magneting coupling system. A large precise analogues indicator is geared to give a directly proportional read out in m and cm to the height the float and hence of the liquid level.

APPLICATION:

The REVATHI-HEINRICH'S Liquid Level Indicator, Type RMBL, is used for the level Measurement and control in open or close vessels on liquids, gases, with materials selected to withstand the corrosive properties of the fluid. High pressure ratings and ex-proof design make the MBL suitable for application under severe operating conditions and in hazardous areas. The MBL has been proven successful in the chemical and pharmaceutical industry, on oil and liquid fuel tanks, pressure vessels and various other storage tanks.

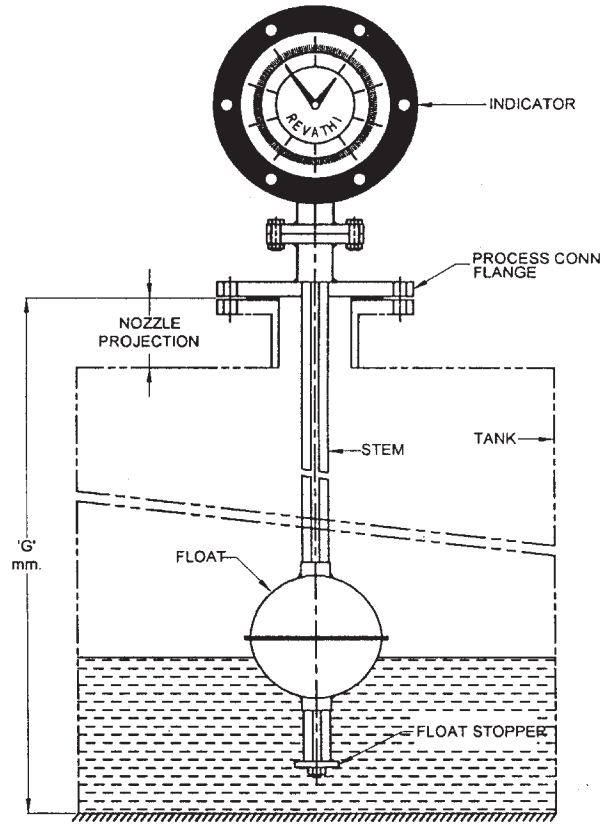
- Suitable for liquid level measurement on open and closed vessels.
- Application under severe operating conditions, even on rapidly fluctuating levels, and shipboard use.
- Approved for hazardous areas.
- Various materials of construction available according to application SS, PP, PVC, HDPE, PTFE, PVDF etc.,
- High measuring and transmission accuracy.
- Accurate and hysteresis –free transmission through a high powered and unbreakable magnetic coupling between measuring float and indicating system.
- Glandless magnetic transmission without stuffing boxes.
- Large analogous indicator, scale in m and cm, readable from a distance.
- Pressure and gas tight separation of measuring and indication system.
- Dismantling of indicating system possible when vessel is under pressure.
- Weatherproof indicator housing IP 65.
- No additional power supply required.
- Pneumatic or electronic signal transmission available as optional feature.
- Adjustable high and / or low alarm relays available as optional feature.
- Highly suitable for interface Level measurement.

TECHNICAL DATA :

1. Process Connection size and rating : 6" ANSI 150# RF flanged, Std or To Mention
2. Pressure ratings : Ranging from 6 Kg/Cm²g to 25 Kg/Cm²g
Dependent or float type used.
3. Service : To mention
4. Op.pressureKg/Cm2g/temp.° C / Sp.Gr. : To mention
5. R-MBL 1-120 : 10 m
6. R-MBL 1-170 : 6 m
7. Scale diameters : ϕ 110 mm = m indication cm and m division.
Volume % division optional 1
rotation of the large pointer = 1 m.
8. Accuracy : \pm 1.5 mm
9. Density : \geq 500 Kg/M³
10. Measuring range : To Mention
11. Qty. : To Mention

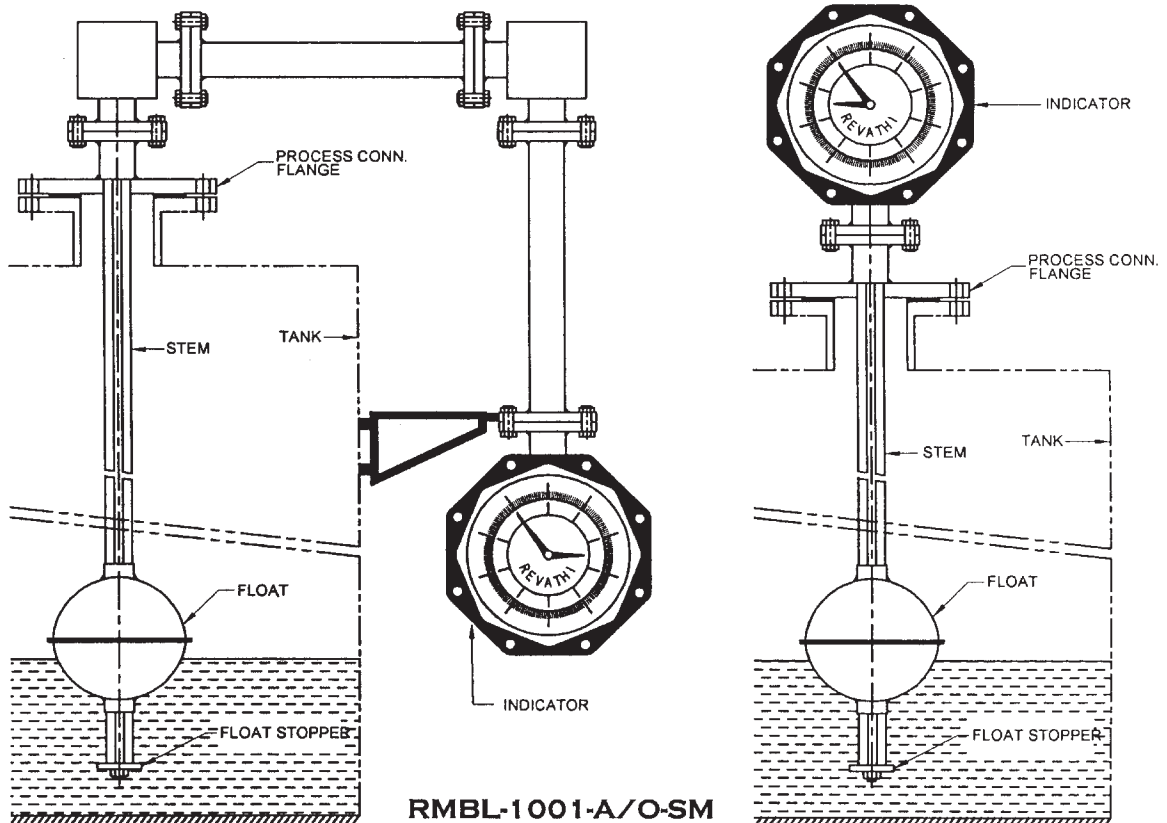
ITEM NO. : 27

TANK LEVEL GAUGE TOP MOUNTED



RMBL-1001-A/O-TM

TANK LEVEL GAUGE SIDE MOUNTED



RMBL-1001-A/O-SM